



65 Linkway Gardens
 , Leicester, LE3 0LW
 Asking Price £135,000

This spacious two-bedroom flat is conveniently located just off Fosse Road South. Situated on the ground floor, it features a generous lounge that flows into a separate kitchen area, along with two comfortable double bedrooms and a bathroom equipped with a three-piece suite. The property benefits from double glazing and gas central heating, plus it boasts an enclosed rear garden and a garage for added convenience.

- No Chain
- Ideal first time purchase or investment
- Ground floor
- Two double bedrooms
- Family bathroom
- View today
- Ideal location

Viewing

Please contact our Berkley Leicester Office on 0116 2544755 if you wish to arrange a viewing appointment for this property or require further information.

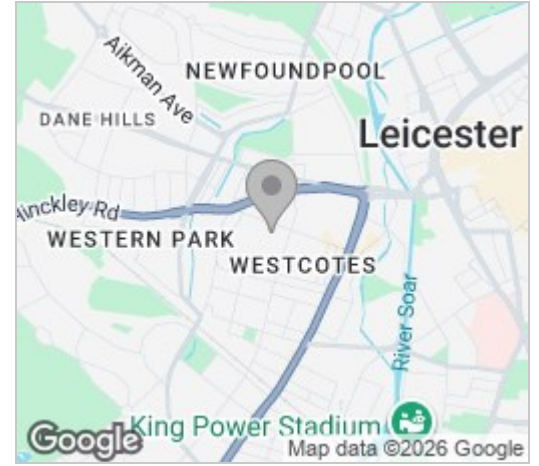


2
 1
 1

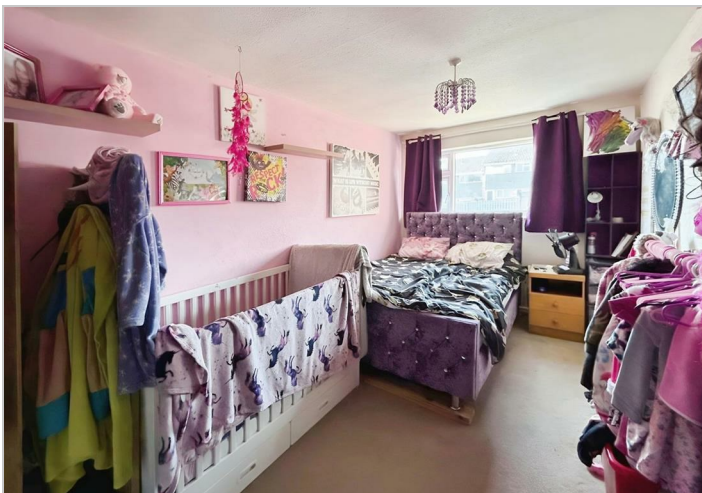
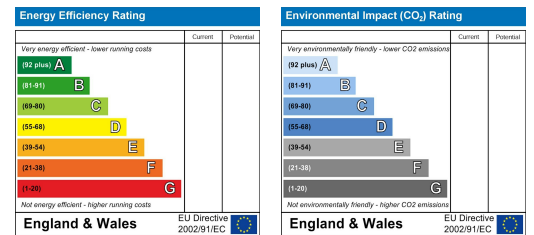
Floor Plan



Area Map



Energy Efficiency Graph



These particulars, whilst believed to be accurate are set out as a general outline only for guidance and do not constitute any part of an offer or contract. Intending purchasers should not rely on them as statements of representation of fact, but must satisfy themselves by inspection or otherwise as to their accuracy. No person in this firm's employment has the authority to make or give any representation or warranty in respect of the property.